

aPt

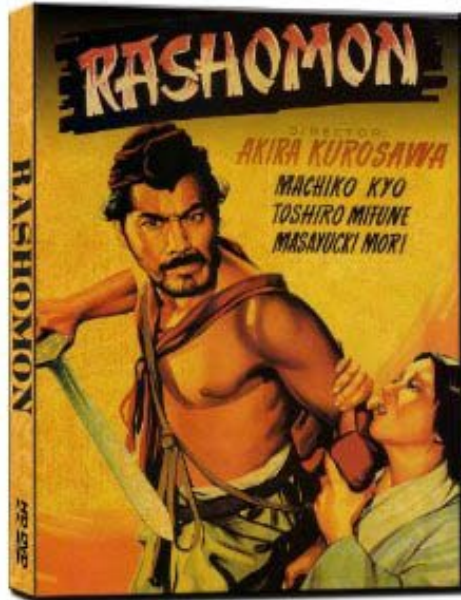
The Psychoanalytic Center of Philadelphia's  
**Alliance for Psychoanalytic Thought**

*Reel Thinking* series presents  
Akira Kurosawa's 1950 Classic

# **RASHOMON**

*Directed by:* Akira Kurosawa

*Starring:* Makiko Kyo, Toshiro Mifune, Masayuki Mori, Takashi Shimura, Minoru Chiaki



- Rashomon introduced Kurosawa and Japan film to the western world and is considered one of his masterpieces.
- 1<sup>ST</sup> Prize, Golden Lion-Venice Film Festival
- Honorary award-24<sup>th</sup> Academy Awards
- Best Foreign film- Academy award
- Blue Ribbon Award-Tokyo Film Festival
- National Board Review Award-USA

**Sunday, January 29th, 2012**  
**2:00-5:00pm**

This 1950 film by Akira Kurosawa is more than a classic. Brimming with action while incisively examining the nature of truth, *Rashomon* is perhaps the finest film ever to investigate the philosophy of justice. Through an ingenious use of camera and flashbacks, Kurosawa reveals the complexities of human nature as four people recount different versions of the story of a man's murder and the rape of his wife. Toshiro Mifune gives another commanding performance in the eloquent masterwork that revolutionized film language and introduced Japanese cinema to the world. (Amazon.com)

Discussion by  
**Elio Frattaroli, MD**  
Faculty, PCOP

**Rockland - East Fairmount Park**  
3810 Mt.Pleasant Drive, Philadelphia, PA 19121

Free to PCOP Members and those with student/resident ID  
\$20 admission fee for non members; applicable toward CME/CE credits (\$20/credit-hour)

*For further information:*

Psychoanalytic Center of Philadelphia  
[pcop@philanalysis.org](mailto:pcop@philanalysis.org)

215-235-2345 (Voice); 215-235-2388 (Fax)

Gail Corrado, M.D.  
[gailcorrado@verizon.net](mailto:gailcorrado@verizon.net)

## **Summary and Conclusions**

Rashomon has become part of the world's consciousness & lexicon. It is story of an action involving several participants, each with their own differing version of the truth. A rape and murder have occurred in woods. We hear and see different versions of the same encounter. Who is telling the truth? Is there an absolute objective truth, or does every teller of the tale inherently only tell the truth as he sees it? And if everyone is a "liar" and there is no absolute truth, what is the point of anything? Rashomon offers some rather profound insights into the human condition. "In a Grove," which was the basis for Kurosawa's classic film, tells the chilling story of the killing of a samurai through the testimony of witnesses, including the spirit of the murdered man. The film explores many of the vicissitudes of human emotions, conflicts, the search for truth, and judgment.

## **Educational Goals**

At the end of the program the attendees will be able to:

- 1) Discuss the dramatic and psychological function of Kurosawa's combining elements of two different short stories, "Rashomon," and "In A Grove."
- 2) Discuss whether or not the priest's statement: "I...have seen hundreds of men dying like animals but even I've never before heard anything as terrible as this. Horrible. It's horrible!" is an appropriate commentary on the story. If so, why so? If not why not?
- 3) Suggest reasons why the film's sixth major character, the commoner who runs to the gate for shelter, joining the priest and the woodcutter there, in the opening scene of the play, is not listed in the credits.

## **CONTINUING MEDICAL EDUCATION/CONTINUING EDUCATION**

**Continuing Medical Education (CME):** This activity has been planned and implemented in accordance with the Essential Areas and policies of the Accreditation Council for Continuing Medical Education through the joint sponsorship of the American Psychoanalytic Association and the Psychoanalytic Center of Philadelphia. The American Psychoanalytic Association is accredited by the ACCME to provide continuing medical education for physicians.

The American Psychoanalytic Association designates this Live Activity for a maximum of **3.0 AMA PRA Category 1 Credit(s)<sup>TM</sup>**. Physicians should claim only the credit commensurate with the extent of their participation in the activity.

**IMPORTANT DISCLOSURE INFORMATION FOR ALL LEARNERS:** None of the planners and presenters of this CME program have any relevant financial relationships to disclose.

**Continuing Education for Psychologists (CE):** The Psychoanalytic Center of Philadelphia is approved by the American Psychological Association to sponsor Continuing Education for psychologists. The Psychoanalytic Center of Philadelphia maintains responsibility for this program and its content.

**Continuing Education for Social Workers (CE):** In accordance with the requirements of the Commonwealth of PA dated 12/23/06 [49 PA. CODE 47—49], the American Psychological Association is a pre-approved provider for social workers and clinical social workers in the State of Pennsylvania and the Psychoanalytic Center of Philadelphia is approved to sponsor continuing education credits by the American Psychological Association.